

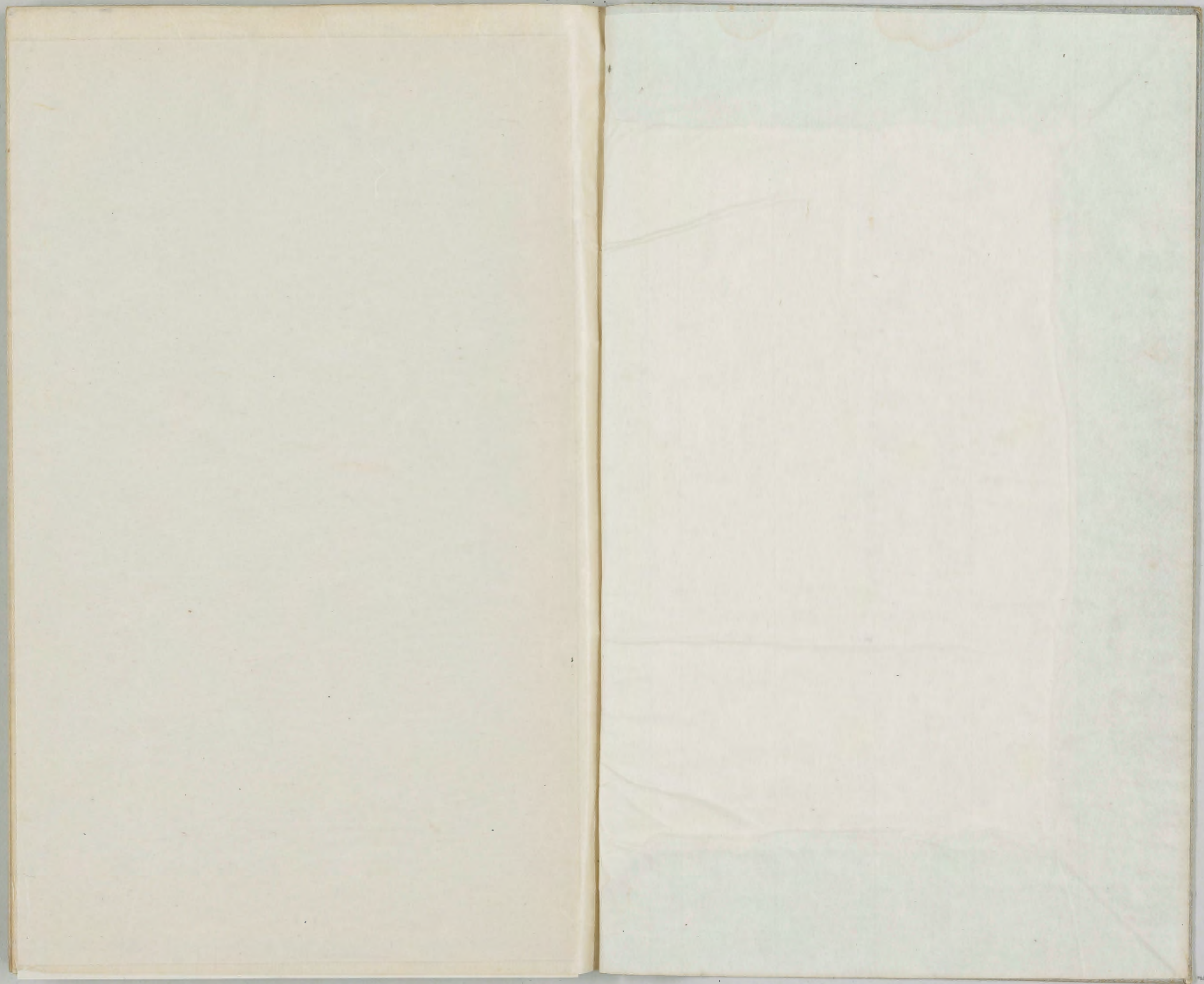


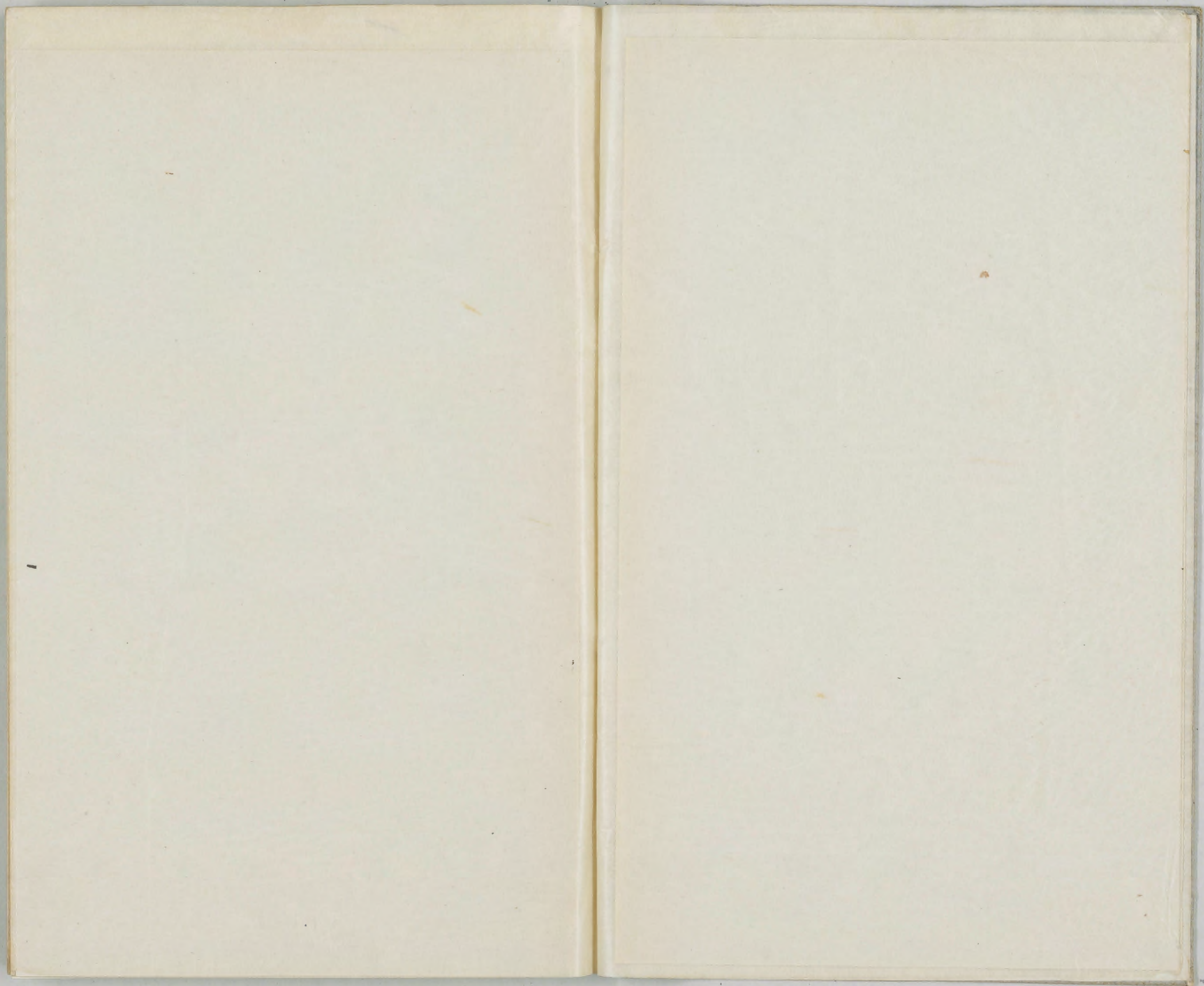
〔從六位醫學士筒井秀二郎述〕病理解剖学 消化器、神經系

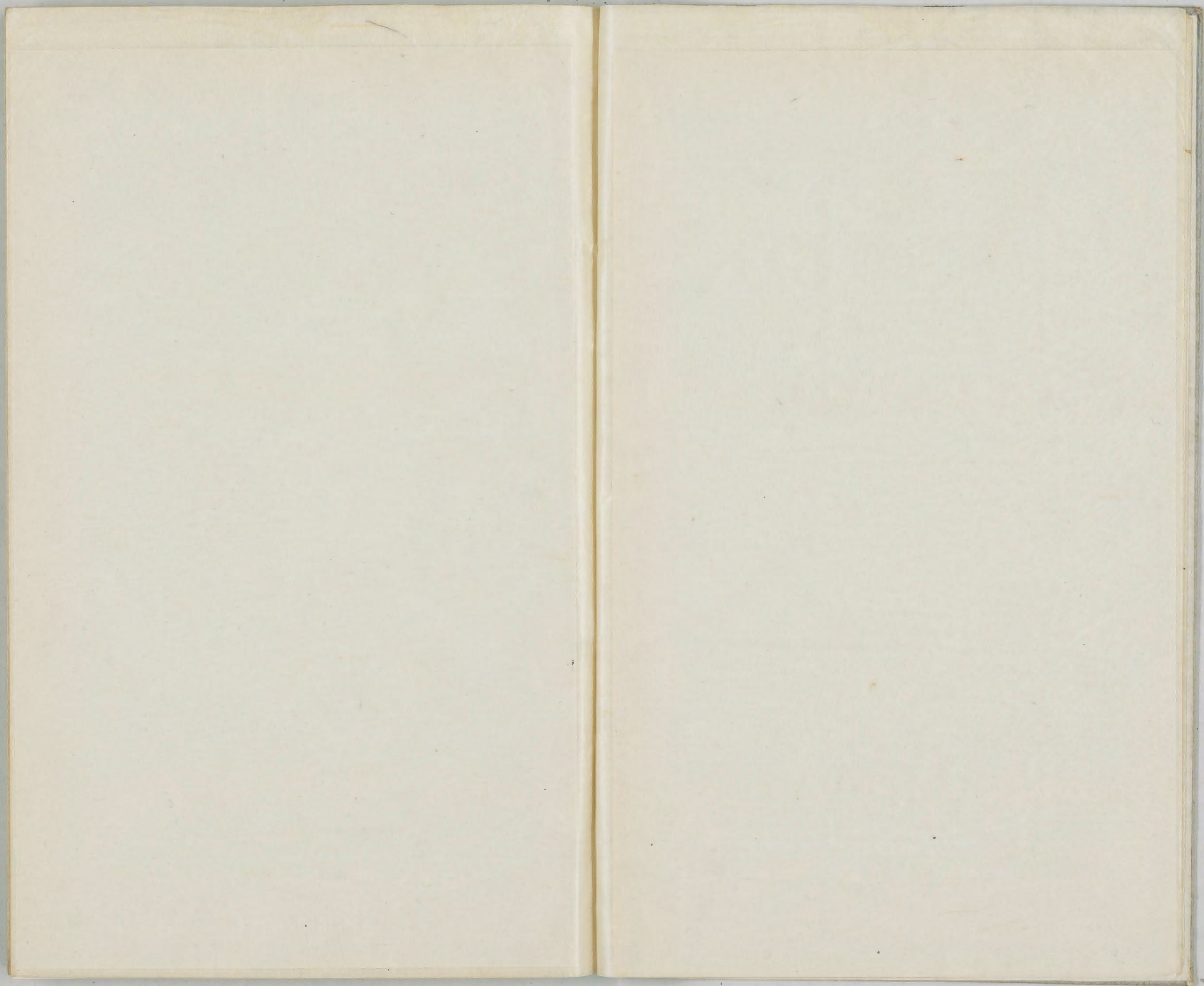
後六位醫學士筒井秀二郎述

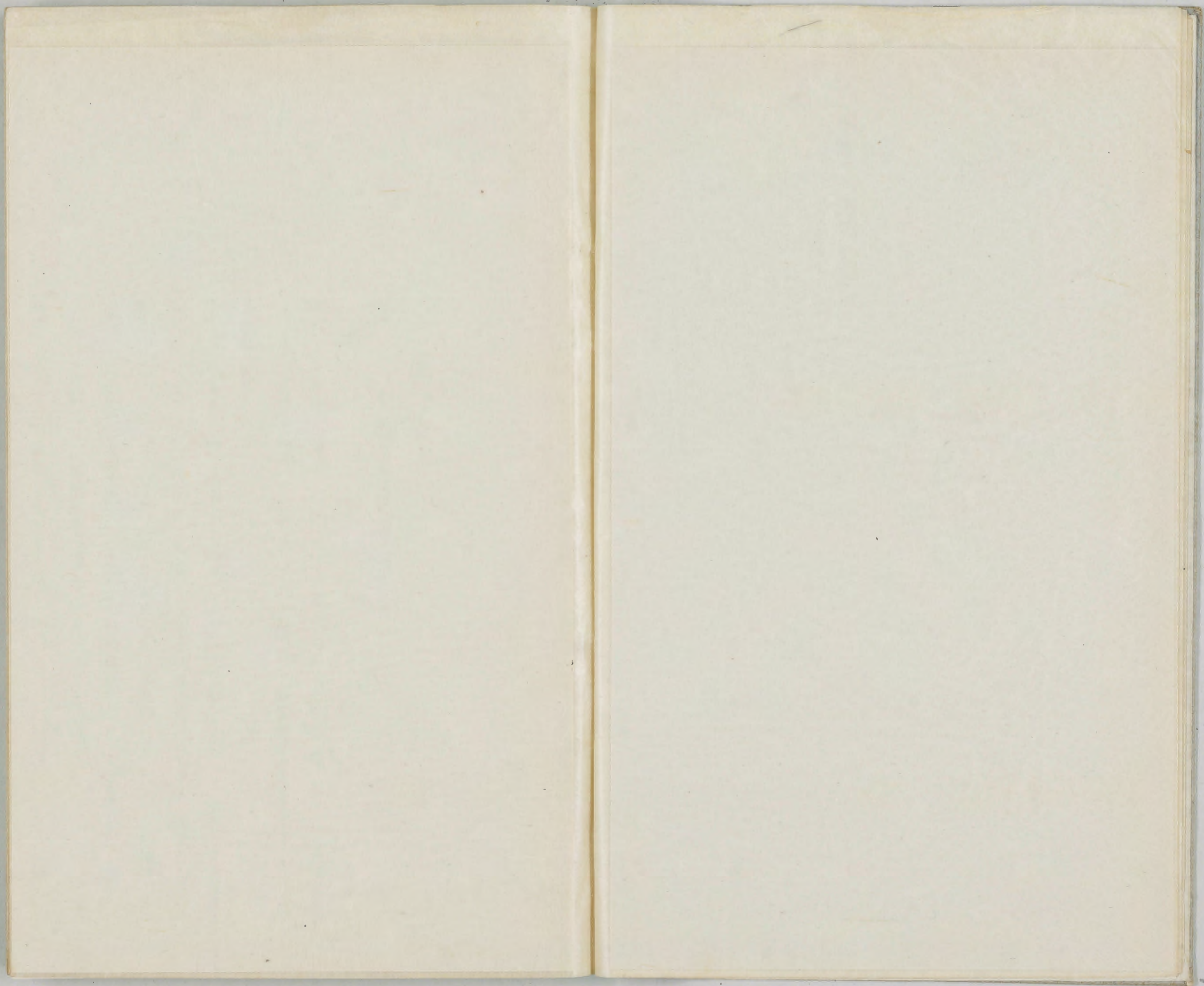
病理解剖学

消化器 神經系
申野系









Handwritten text in a cursive script, likely a form of shorthand or a specific dialect. The text is arranged in approximately 12 horizontal lines across the left page of the manuscript.

消記畧
口腔呈周明海理解到

The right page of the manuscript is mostly blank, with only a few faint, illegible markings or bleed-through from the reverse side.

Handwritten text in a cursive script, likely a religious or legal document. The text is written in a dark ink on aged paper. It begins with a large initial letter, possibly 'A' or 'B', followed by several lines of text. The script is dense and characteristic of the late medieval or early modern period.

Continuation of the handwritten text from the first page. The script remains consistent, showing a high level of fluency in the cursive style. The text appears to be a single, continuous piece of writing, possibly a letter or a formal document.

Final line of text on the left page, ending with a decorative flourish or a specific terminal mark.

Handwritten text on the right page, continuing the narrative or document from the left page. The script is consistent with the previous pages, showing a clear and legible cursive hand. The text is densely packed and covers most of the page.

Final line of text on the right page, concluding the document with a decorative flourish.

Handwritten text in a cursive script, likely a continuation from the previous page.

Handwritten title or section header.

Main body of handwritten text on the left page, consisting of several lines of cursive script.

STomatinia ordination

Handwritten text in a cursive script, likely a continuation from the previous page.

Main body of handwritten text on the right page, consisting of several lines of cursive script.

STomatinia (Samaritanian)

STomatinia Samaritanian Samaritanian Samaritanian

Handwritten text in Arabic script, likely a title or introductory line.

Handwritten title or section header in Arabic script.

Main body of handwritten text in Arabic script, consisting of several lines.

Second main body of handwritten text in Arabic script, continuing the previous section.

Handwritten title or section header in Arabic script, located at the top of the page.

Main body of handwritten text in Arabic script, consisting of several lines.

Handwritten text in a cursive script, likely a list or index, starting with a large initial letter. The text is written in a dark ink on aged paper.

Handwritten text in a cursive script, continuing the list or index. The text is written in a dark ink on aged paper.

Handwritten text in a cursive script, likely a list or index, starting with a large initial letter. The text is written in a dark ink on aged paper.

Handwritten text in a cursive script, continuing the list or index. The text is written in a dark ink on aged paper.

Handwritten text in a cursive script, likely a continuation from the previous page.

(7) 結核

Handwritten text, possibly a sub-section or a specific note.

Main body of handwritten text on the left page, continuing the script.

gunma

Main body of handwritten text on the right page, continuing the script.

Handwritten text, possibly a signature or a specific note.

Handwritten text at the bottom of the right page.

Handwritten text in a cursive script, likely a religious or philosophical treatise. The first line is partially cut off on the left edge.

Handwritten text in a cursive script, continuing the text from the previous page. The script is dense and fills most of the page.

Handwritten text in a cursive script, starting with a large initial letter. The text is written in a consistent hand.

Handwritten title or section header in a cursive script, positioned centrally on the page.

Handwritten text in a cursive script, continuing the text from the previous page. The script is dense and fills most of the page.

Handwritten text in Arabic script, consisting of approximately 15 lines. The script is dense and cursive, typical of historical Arabic manuscripts. The text appears to be a formal document or a religious treatise, given the use of certain honorifics and the structured nature of the lines.

Handwritten text in Arabic script, consisting of approximately 15 lines. This page continues the text from the previous page, maintaining the same dense, cursive style. The lines are well-aligned and show a consistent flow of the document's content.

Handwritten text in Arabic script, likely a title or introductory line.

Handwritten text in Arabic script, likely a title or introductory line.

Handwritten text in Arabic script, likely a title or introductory line.

Handwritten title in Arabic script, possibly 'Treatise on the Cure of the Disease'.

Main body of handwritten text in Arabic script, consisting of several lines of prose.

Handwritten text in Arabic script, likely a concluding line or a separate section.

Main body of handwritten text in Arabic script, consisting of several lines of prose.

Handwritten text in Arabic script, likely a concluding line or a separate section.

Handwritten title in Arabic script, possibly 'Treatise on the Cure of the Disease'.

Main body of handwritten text in Arabic script, consisting of several lines of prose.

Handwritten text in a cursive script, likely a continuation from the previous page.

Handwritten title or section header.

Main body of handwritten text on the left page, consisting of several lines of cursive script.

Continuation of handwritten text on the left page, showing a change in line structure.

Main body of handwritten text on the right page, continuing the cursive script.

Handwritten title or section header on the right page.

Continuation of handwritten text on the right page, including a final line of script.

Handwritten title at the top of the page.

Main body of handwritten text on the left page, starting with a small header.

Handwritten title in the middle of the left page.

Main body of handwritten text on the left page, below the middle title.

Handwritten title at the top of the right page.

Main body of handwritten text on the right page, starting with a small header.

Handwritten text in a cursive script, likely a historical or administrative document. The text is arranged in approximately 12 horizontal lines across the page.

Handwritten text in a cursive script, likely a historical or administrative document. The text is arranged in approximately 12 horizontal lines across the page.

Handwritten text in a cursive script, likely a historical or administrative document. The text is arranged in approximately 15 horizontal lines across the page.

Handwritten text in a cursive script, continuing from the previous page. It consists of approximately 15 horizontal lines of text.

Small handwritten text or signature located at the bottom center of the page.

Small handwritten text or signature located at the bottom right of the page.

Handwritten text in Arabic script, top line of the left page.

Main body of handwritten text in Arabic script on the left page.

Main body of handwritten text in Arabic script on the right page.

Handwritten text in a cursive script, likely a continuation from the previous page. The text is dense and fills most of the left margin.

新編

Main body of handwritten text on the left page, continuing the narrative or list from the previous page. The script is consistent with the rest of the document.

新編

Handwritten text on the right page, starting with a section header. The text is arranged in a single column.

新編

Main body of handwritten text on the right page, continuing the content from the previous page. The text is dense and fills most of the right margin.

Handwritten text in Arabic script, likely a preface or introductory section.

بسم الله الرحمن الرحيم

Handwritten text in Arabic script, continuing the preface or introductory section.

الحمد لله

Handwritten text in Arabic script, beginning the main body of the manuscript.

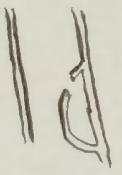
Main body of handwritten text in Arabic script, consisting of several paragraphs.

Handwritten text at the top of the right page.

Handwritten text below the top line.

Main body of handwritten text on the right page, consisting of several lines.

Handwritten text at the bottom of the right page.



Main body of handwritten text on the left page, consisting of several lines.

Main body of handwritten text on the left page, consisting of several lines.

Handwritten text at the bottom of the left page.

Handwritten text in vertical columns, likely a list or index. The script is a cursive style, possibly Arabic or Persian. The text is arranged in approximately 10 vertical columns, starting from the right side of the page and moving left.

Handwritten text in vertical columns, continuing the list or index. The script is consistent with the previous section. The text is arranged in approximately 10 vertical columns, starting from the right side of the page and moving left.

Handwritten text at the top of the page, possibly a title or a specific entry. It is written in a cursive script.

Handwritten section header or title, positioned centrally at the top of the page.

Handwritten section header or title, positioned centrally below the first header.

Main body of handwritten text in vertical columns. The text is arranged in approximately 10 vertical columns, starting from the right side of the page and moving left. The script is a cursive style, consistent with the rest of the document.

Main body of handwritten text on the left page, consisting of several lines of cursive script.

Main body of handwritten text on the right page, consisting of several lines of cursive script.

Handwritten text in a cursive script, likely a form of Arabic or Persian. The text is arranged in approximately 15 horizontal lines across the page. The script is dense and fluid, with some characters appearing to be ligatures or specific dialectal forms. The overall appearance is that of a historical manuscript or a collection of letters.

Handwritten text in a cursive script, likely a form of Arabic or Persian. The text is arranged in approximately 15 horizontal lines across the page. The script is dense and fluid, with some characters appearing to be ligatures or specific dialectal forms. The overall appearance is that of a historical manuscript or a collection of letters.

Handwritten text in a cursive script, likely a medical or scientific treatise. The text is written in a dense, flowing style across the page.

陽性公成入

Handwritten text in a cursive script, continuing the treatise from the previous page. The text is written in a dense, flowing style across the page.

Handwritten text in vertical columns, likely a list or index of items related to the sea.

目

Handwritten text in vertical columns, continuing the list or index from the previous page.

Handwritten text in Arabic script, likely a manuscript page. The text is dense and covers most of the page.

Handwritten text in Arabic script, likely a manuscript page. The text is dense and covers most of the page.

Handwritten text in Arabic script, likely a religious or philosophical treatise. The text is densely packed and covers most of the page.

Handwritten text in Arabic script, continuing the treatise from the previous page. The text is densely packed and covers most of the page.

Handwritten text in a cursive script, likely a historical record or account.

大 冊

Handwritten text, possibly a title or introductory phrase.

Handwritten text, continuing the narrative or record.

Handwritten text, possibly a date or marker.

Handwritten text, continuing the narrative or record.

Handwritten section header.

Handwritten text, continuing the narrative or record.

Handwritten text, continuing the narrative or record.

Handwritten text, continuing the narrative or record.

Handwritten text, continuing the narrative or record.

Handwritten text, continuing the narrative or record.

Handwritten text in a cursive script, likely a historical record or account.

Handwritten text, continuing the narrative or record.

Handwritten text, continuing the narrative or record.

Handwritten text, continuing the narrative or record.

Handwritten text, continuing the narrative or record.

Handwritten text, continuing the narrative or record.

Handwritten section header.

Handwritten text, possibly a date or marker.

Handwritten text, continuing the narrative or record.

Handwritten text, continuing the narrative or record.

Handwritten text, continuing the narrative or record.

Handwritten text, continuing the narrative or record.

Handwritten text, continuing the narrative or record.

Handwritten text, continuing the narrative or record.

Handwritten text in a cursive script, likely a religious or philosophical treatise. The text is arranged in approximately 12 horizontal lines across the page.

Handwritten text in a cursive script, continuing the text from the previous page. It begins with a small heading or section marker.

Handwritten text in a cursive script, starting with a large initial letter. The text is arranged in approximately 4 horizontal lines.

Handwritten text in a cursive script, continuing the text from the previous page. It begins with a small heading or section marker.

Handwritten text in a cursive script, likely a section header or a specific phrase.

Handwritten text in a cursive script, continuing the text from the previous page. It begins with a small heading or section marker.

Handwritten text in Arabic script, likely a religious or philosophical treatise. The text is densely packed and covers most of the page.

بسم الله الرحمن الرحيم

Handwritten text in Arabic script, continuing the treatise from the previous page. The text is densely packed and covers most of the page.

بسم الله الرحمن الرحيم

1. 2. 3. 4. 5. 6. 7. 8. 9. 10. 11. 12. 13. 14. 15. 16. 17. 18. 19. 20. 21. 22. 23. 24. 25. 26. 27. 28. 29. 30. 31. 32. 33. 34. 35. 36. 37. 38. 39. 40. 41. 42. 43. 44. 45. 46. 47. 48. 49. 50. 51. 52. 53. 54. 55. 56. 57. 58. 59. 60. 61. 62. 63. 64. 65. 66. 67. 68. 69. 70. 71. 72. 73. 74. 75. 76. 77. 78. 79. 80. 81. 82. 83. 84. 85. 86. 87. 88. 89. 90. 91. 92. 93. 94. 95. 96. 97. 98. 99. 100.

1. 2. 3. 4. 5. 6. 7. 8. 9. 10. 11. 12. 13. 14. 15. 16. 17. 18. 19. 20. 21. 22. 23. 24. 25. 26. 27. 28. 29. 30. 31. 32. 33. 34. 35. 36. 37. 38. 39. 40. 41. 42. 43. 44. 45. 46. 47. 48. 49. 50. 51. 52. 53. 54. 55. 56. 57. 58. 59. 60. 61. 62. 63. 64. 65. 66. 67. 68. 69. 70. 71. 72. 73. 74. 75. 76. 77. 78. 79. 80. 81. 82. 83. 84. 85. 86. 87. 88. 89. 90. 91. 92. 93. 94. 95. 96. 97. 98. 99. 100.

Handwritten text in Arabic script, likely a religious or philosophical treatise. The text is arranged in approximately 15 horizontal lines across the page.

Handwritten word or phrase at the top of the page.

Handwritten title or section header in Arabic script.

Main body of handwritten text in Arabic script, consisting of approximately 15 lines. The script is dense and cursive.

Handwritten text in a cursive script, likely a list or a series of entries. The text is written in a dark ink on aged paper. It appears to be a list of names or titles, possibly related to a collection or a set of records. The script is dense and fills most of the page.

Handwritten text in a cursive script, continuing the list or series of entries from the previous page. The text is written in a dark ink on aged paper. It appears to be a list of names or titles, possibly related to a collection or a set of records. The script is dense and fills most of the page.

Handwritten text in a cursive script, continuing the list or series of entries from the previous page. The text is written in a dark ink on aged paper. It appears to be a list of names or titles, possibly related to a collection or a set of records. The script is dense and fills most of the page.

Handwritten text in Arabic script, likely a preface or introductory section.

بِسْمِ اللَّهِ الرَّحْمَنِ الرَّحِيمِ

Main body of handwritten text in Arabic script, consisting of several lines of prose.

Handwritten text in Arabic script, likely a continuation of the previous page.

الحمد لله

Main body of handwritten text in Arabic script on the right page, including a concluding section.

Handwritten text in a cursive script, likely a form or document, covering the left page of the manuscript.

Handwritten title or header at the top of the right page.

Main body of handwritten text on the right page, consisting of several lines of cursive script.

Handwritten text in a cursive script, likely a historical or administrative document. The text is densely packed and covers most of the page.

Handwritten title or section header, possibly indicating the subject of the document.

Handwritten text in a cursive script, continuing the narrative or administrative content from the previous page.

Handwritten title or section header, possibly indicating the subject of the document.

Handwritten text in a cursive script, concluding the document or a specific section.

Handwritten text in Arabic script, likely a religious or philosophical treatise. The text is written in a cursive style and covers the upper portion of the page.

Handwritten title or section header in Arabic script, centered below the main text block.

Handwritten text in Arabic script, continuing the treatise. This section includes several lines of text with some larger, possibly decorative or significant, characters.

Handwritten text in Arabic script, continuing the treatise. This section is densely packed with text and includes some lines that appear to be in a different dialect or style, possibly indicating a specific part of the work.

Handwritten text in a cursive script, likely a list or a series of entries. The text is written in a dark ink on aged paper. It begins with a small symbol resembling a cross or a similar character, followed by several lines of text. The script is dense and characteristic of historical manuscripts.

Handwritten title or section header, possibly indicating a specific category or a new section of the text.

Continuation of the handwritten text, following the section header. The text is organized into several lines, with some entries appearing to be numbered or grouped. The script remains consistent with the first section.

Handwritten text at the top of the page, possibly a continuation from the previous page or a new entry.

Handwritten title or section header, similar in style to the one on the left page.

Main body of handwritten text on the right page, consisting of several lines of cursive script. The text appears to be a list or a series of entries, similar to the left page.

Handwritten text, possibly a sub-section or a specific entry within the main body.

Final section of handwritten text on the right page, continuing the list or series of entries. The script is consistent with the rest of the document.

Handwritten text in a cursive script, likely a historical or administrative document. The text is densely packed and covers most of the page.

西尔

一

Handwritten text in a cursive script, continuing from the previous page. The text is densely packed and covers most of the page.

Handwritten text in Arabic script, likely a religious or philosophical treatise. The text is densely packed and covers most of the page.

Handwritten text in Arabic script, continuing the treatise from the previous page. The text is densely packed and covers most of the page.

Handwritten text in Arabic script, consisting of approximately 12 lines of dense cursive writing.

Handwritten text in Arabic script, continuing from the previous section with approximately 12 lines of dense cursive writing.

Handwritten text in Arabic script, consisting of approximately 12 lines of dense cursive writing.

Handwritten text in a cursive script, likely a form or document. The text is arranged in approximately 15 horizontal lines across the page.

Handwritten text at the top of the page.

Handwritten text below the first line.

Main body of handwritten text, consisting of several lines.

Handwritten text, possibly a signature or a specific label.

Handwritten text.

Handwritten text, continuing the document's content.

Handwritten text.

Handwritten text.

Final section of handwritten text at the bottom of the page.

Handwritten text in a cursive script, likely a continuation from the previous page. The text is dense and fills most of the page.

Handwritten text in a cursive script, continuing the previous page. The script is consistent and well-written.

Handwritten header or section title in a cursive script, positioned at the top of the page.

Handwritten text in a cursive script, starting with a small header. The text is organized into several lines, with some spacing between them.

Handwritten text in a cursive script, likely a religious or philosophical treatise. The text is written in a dark ink on aged paper.

Handwritten text in a cursive script, continuing the treatise. The text is written in a dark ink on aged paper.

Handwritten text in a cursive script, likely a religious or philosophical treatise. The text is written in a dark ink on aged paper.

Handwritten text in a cursive script, likely a religious or philosophical treatise. The text is written in a dark ink on aged paper.

Handwritten text in vertical columns, likely a list or index of items.

Handwritten title or section header.

Handwritten characters, possibly a date or reference.

Handwritten text in vertical columns, continuing the list or index.

Handwritten text in vertical columns, likely a list or index of items.

Handwritten text in Arabic script, likely a religious or philosophical treatise. The text is densely packed and covers most of the page.

Handwritten text in Arabic script, continuing the treatise from the previous page. The text is densely packed and covers most of the page.

Handwritten text in a cursive script, likely a form of Arabic or Persian, covering the left page of the manuscript. The text is arranged in approximately 12 horizontal lines, written from right to left. The ink is dark and the script is fluid and connected.

Handwritten text in a cursive script, likely a form of Arabic or Persian, covering the top portion of the right page. It consists of about 5 lines of text, continuing the style of the left page.

Handwritten title or section header in a cursive script, centered on the right page. It appears to be a single line of text.

Handwritten text in a cursive script, likely a form of Arabic or Persian, covering the bottom portion of the right page. It consists of about 7 lines of text, continuing the style of the left page.

Handwritten text in a cursive script, likely a historical or administrative document. The text is written in a dark ink on aged paper. It begins with a small header or title at the top left. The main body of text consists of several lines of dense, flowing script. There are some larger, possibly decorative or significant characters interspersed throughout the text. The handwriting is consistent and well-practiced.

Handwritten text in a cursive script, continuing from the previous page. The text is written in a dark ink on aged paper. It begins with a small header or title at the top left. The main body of text consists of several lines of dense, flowing script. There are some larger, possibly decorative or significant characters interspersed throughout the text. The handwriting is consistent and well-practiced.

Handwritten text in Arabic script, likely a religious or philosophical treatise. The text is written in a cursive style and covers most of the page.

Handwritten title or section header in Arabic script, centered on the page.

Handwritten text in Arabic script, continuing the treatise. It begins with a large initial letter.

Handwritten text in Arabic script, continuing the treatise. It begins with a large initial letter and contains several lines of dense text.

Handwritten text in Arabic script, likely a religious or philosophical treatise. The text is densely packed and covers most of the page.

Handwritten text in Arabic script, continuing the treatise from the previous page. The text is densely packed and covers most of the page.

Handwritten text in a cursive script, likely a historical document or letter. The text is written in a dark ink on aged paper. It begins with a large initial letter, possibly 'A' or 'B', and continues with several lines of text. The script is dense and characteristic of early modern European handwriting.

Handwritten section header or title, possibly a name or a specific reference.

Handwritten text in a cursive script, continuing from the previous page. The text is written in a dark ink on aged paper. It begins with a large initial letter, possibly 'A' or 'B', and continues with several lines of text. The script is dense and characteristic of early modern European handwriting.

Handwritten text in Arabic script, likely a religious or philosophical treatise. The text is densely packed and covers most of the page.

Handwritten text in Arabic script, continuing the treatise from the previous page. It includes several lines of dense script.

بسم الله الرحمن الرحيم

Handwritten text in Arabic script, possibly a concluding section or a separate entry. It is located at the bottom of the page.

Handwritten text in a cursive script, likely a historical document or letter. The text is arranged in approximately 12 horizontal lines across the page.

Handwritten text in a cursive script, likely a historical document or letter. The text is arranged in approximately 12 horizontal lines across the page.

Handwritten characters at the bottom of the page, possibly a signature or a specific mark.

中之系統病理解剖
中規解之至病病
骨髓之病理解剖

血行障害

全身血行障害

一 病之原因多ク然高血圧等全身血行障害等之ニ於テハ不明ナル
リ後ニ必而メテハトス

出血

一 骨髓ニ稀ク血行多ク故ニ之ニ因リ

水腫

一 骨髓内ニ多ク貯ル水腫原等々因リ以テ之ニ因リテハ全身血行障害
ノ影響ヲ受ケル中ニ血行障害等々因リテハ全身血行障害等々
又骨髓内ニ多ク貯ル水腫原等々因リテハ全身血行障害等々
因リテハ全身血行障害等々因リテハ全身血行障害等々
因リテハ全身血行障害等々因リテハ全身血行障害等々

... ..

... ..

... ..

... ..

... ..

... ..

... ..

... ..

... ..

... ..

... ..

... ..

... ..

... ..

... ..

... ..

...

... ..

... ..

... ..

... ..

... ..

... ..

... ..

... ..

... ..

... ..

... ..

... ..

... ..

Handwritten text in a cursive script, likely a religious or philosophical treatise. The text is written in a dark ink on aged paper.

Handwritten text in a cursive script, continuing the text from the previous block. The script is dense and fills most of the page.

Handwritten text in a cursive script, continuing the text from the previous block. The script is dense and fills most of the page.

Handwritten text in Arabic script, likely a preface or introductory section. The text is written in a cursive style and occupies the upper portion of the page.

Handwritten title or section header in Arabic script, centered on the page.

Main body of handwritten text in Arabic script, continuing the narrative or discourse. The text is densely packed and covers most of the page.

Handwritten text in Arabic script, likely a continuation of the previous page or a separate section. The text is written in a consistent cursive style.

Handwritten title or section header in Arabic script, centered on the page.

Main body of handwritten text in Arabic script, continuing the narrative or discourse. The text is densely packed and covers most of the page.

Handwritten text in Arabic script, likely a religious or philosophical treatise. The text is arranged in approximately 18 horizontal lines, written from right to left. The script is a cursive style, possibly Maghrebi or Maghribi, with clear letter forms and consistent spacing. The ink is dark, and the paper shows some signs of age and wear.

Handwritten text in Arabic script, continuing the text from the previous page. It consists of approximately 18 horizontal lines of cursive writing, similar in style to the first page. The text is densely packed and covers most of the page area, leaving some margins. The overall appearance is that of a well-preserved manuscript page.

Handwritten text in a cursive script, likely a form of Arabic or Persian. The text is arranged in several lines, with some characters appearing to be stylized or decorative. The script is dense and fills most of the page.

Handwritten text in a cursive script, likely a form of Arabic or Persian. The text is arranged in several lines, with some characters appearing to be stylized or decorative. The script is dense and fills most of the page.

Handwritten text in a cursive script, likely a form of Arabic or Persian. The text is arranged in several lines, with some characters appearing to be stylized or decorative. The script is dense and fills most of the page.

Handwritten text in a cursive script, likely a form of Arabic or Persian. The text is arranged in several lines, with some characters appearing to be stylized or decorative. The script is dense and fills most of the page.

Handwritten text in a cursive script, likely a form of Arabic or Persian. The text is arranged in several lines, with some characters appearing to be stylized or decorative. The script is dense and fills most of the page.

Handwritten text in a cursive script, likely a form of Arabic or Persian. The text is arranged in several lines, with some characters appearing to be stylized or decorative. The script is dense and fills most of the page.

Handwritten text in a cursive script, likely a form of Arabic or Persian, covering the entire page.

Handwritten text in a cursive script, likely a form of Arabic or Persian, covering the entire page.

Handwritten text in a cursive script, likely a form of Arabic or Persian, covering the entire page.

Handwritten text in a cursive script, likely a preface or introductory section, starting with a large initial character.

Main body of handwritten text on the left page, consisting of several lines of dense cursive script.

Handwritten text in a cursive script, likely a preface or introductory section, starting with a large initial character.

Main body of handwritten text on the right page, consisting of several lines of dense cursive script.

Handwritten text in a cursive script, likely a historical or administrative document. The text is written in a dark ink on aged paper.

Handwritten title or section header, possibly indicating the subject of the document.

Main body of handwritten text, consisting of several lines of cursive script. The text appears to be a detailed account or report.

Handwritten text in a cursive script, continuing the narrative or administrative content from the previous page.

Final section of handwritten text, possibly a conclusion or a signature block, written in the same cursive style.

高麗

高麗國在東海之南，與中國接壤，其地多山，氣候溫和，物產豐富，自古以來，與中國交往頻繁，文化交流甚盛。

高麗

高麗國在東海之南，與中國接壤，其地多山，氣候溫和，物產豐富，自古以來，與中國交往頻繁，文化交流甚盛。

高麗

高麗國在東海之南，與中國接壤，其地多山，氣候溫和，物產豐富，自古以來，與中國交往頻繁，文化交流甚盛。

高麗國在東海之南，與中國接壤，其地多山，氣候溫和，物產豐富，自古以來，與中國交往頻繁，文化交流甚盛。

高麗國在東海之南，與中國接壤，其地多山，氣候溫和，物產豐富，自古以來，與中國交往頻繁，文化交流甚盛。

Handwritten text in a cursive script, likely a list or index, starting with a tilde symbol (~) and followed by several lines of text.

Second section of handwritten text, continuing the list or index with multiple lines of cursive script.

Third section of handwritten text, consisting of several lines of cursive script.

